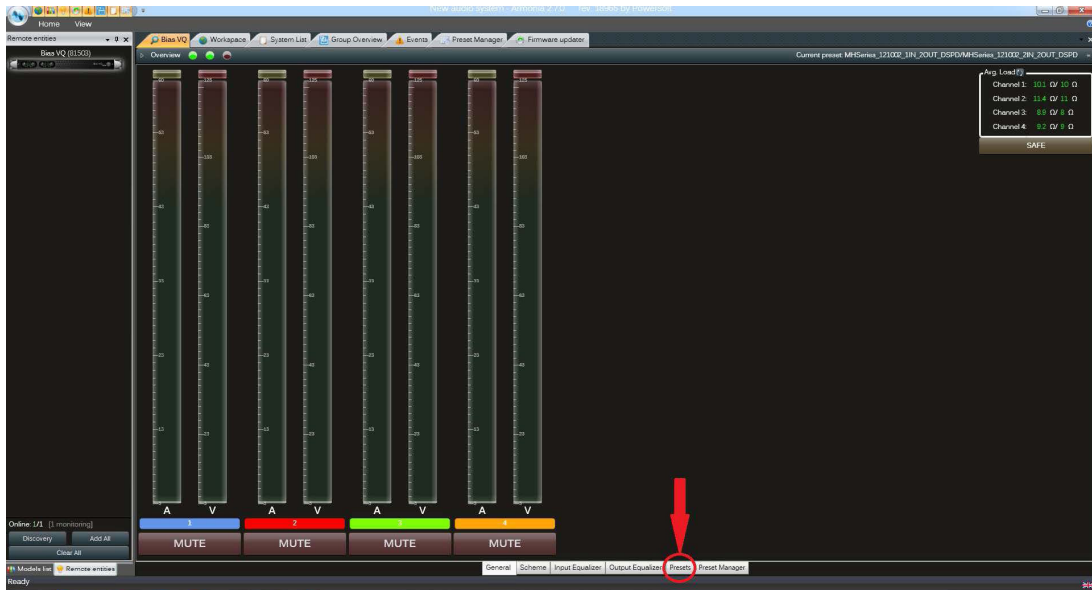
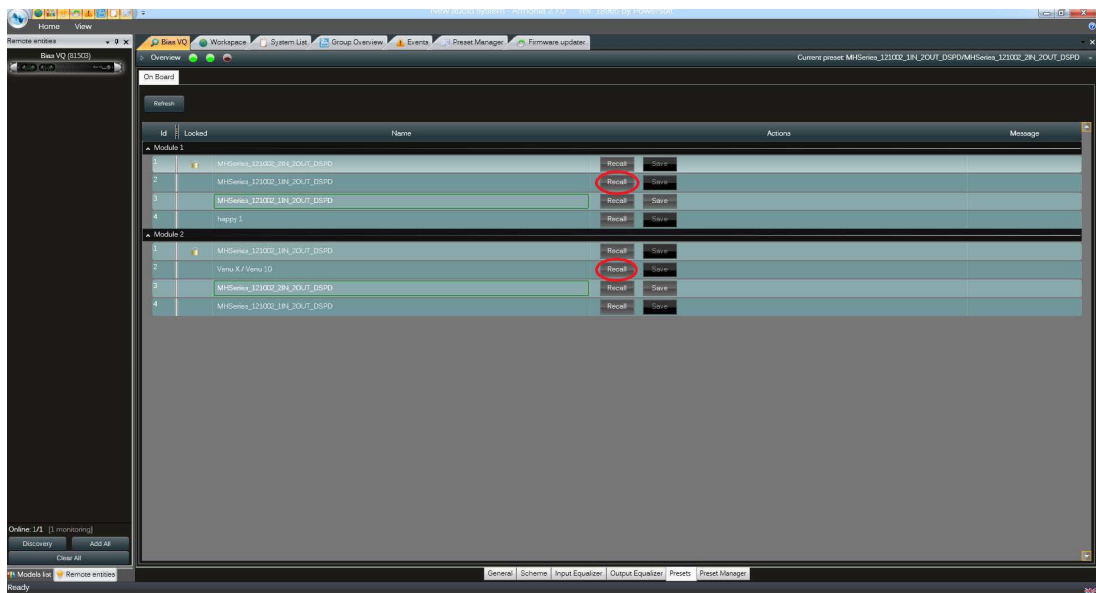


Bias VQ preset saving

1. Double click on the amplifier in the workspace to bring up the amplifier settings. Click on Presets to view the presets screen.

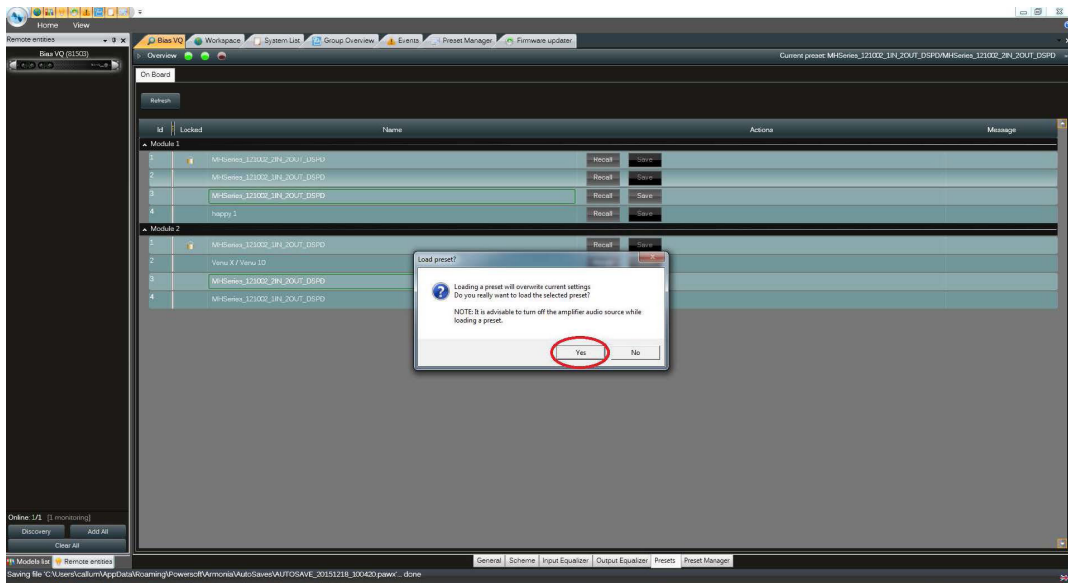


2. In the presets screen, click Recall on the bank you would like to load the preset in to. Please note, this needs to be clicked on both modules.

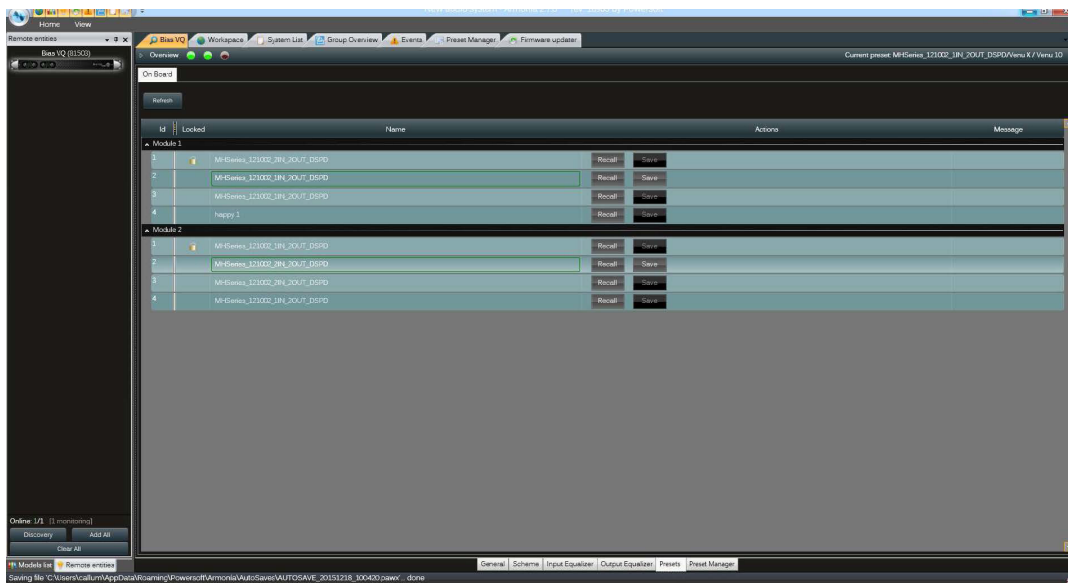


Bias VQ preset saving

3. A dialogue box will come up warning about overwriting current settings. Click Yes.

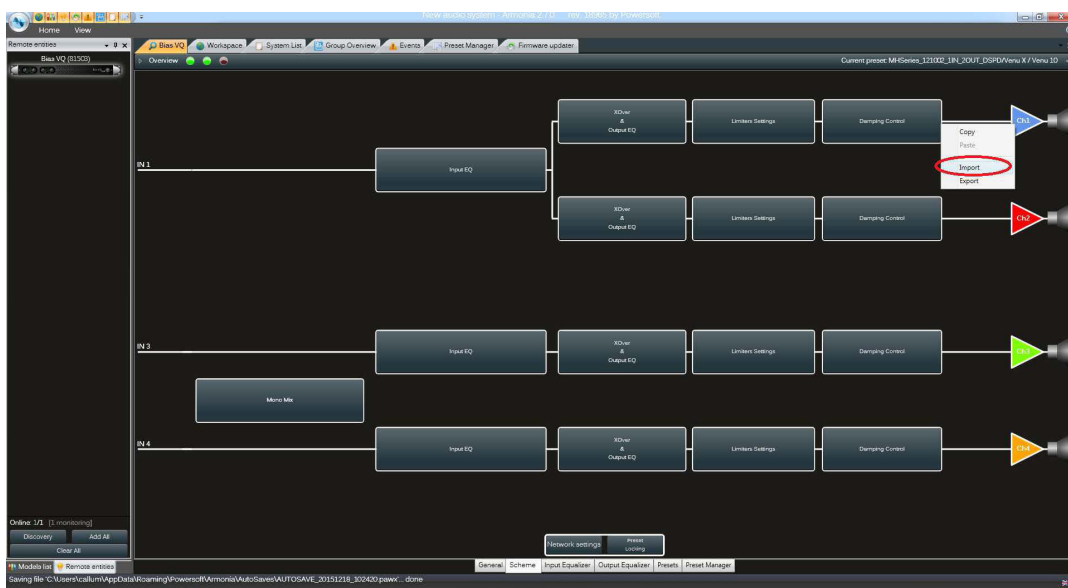
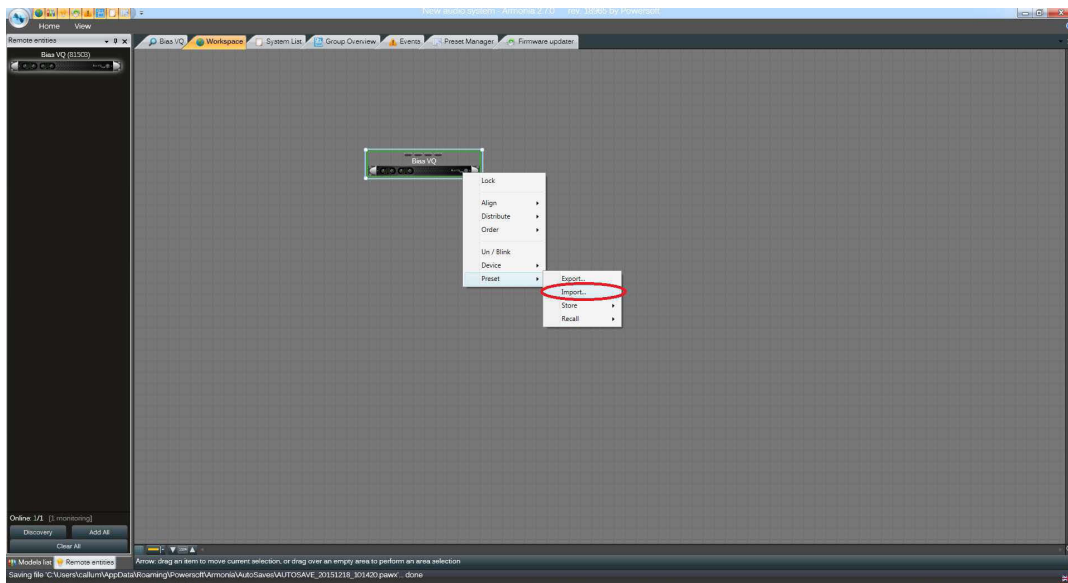


4. A thin green line will show around the preset to confirm it has been selected.



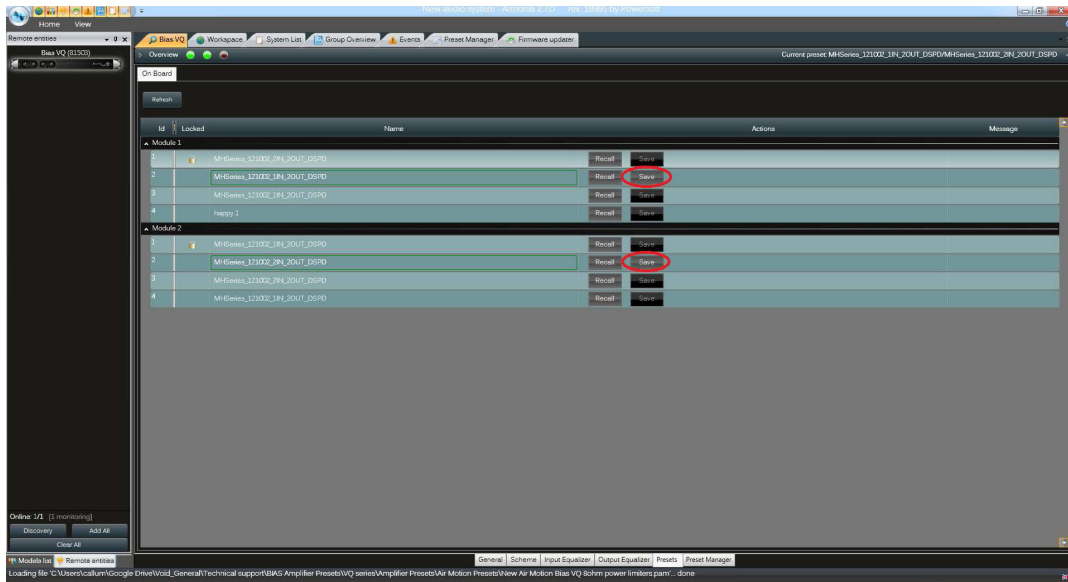
Bias VQ preset saving

5. Load the preset in the normal way, either as an amplifier preset or channel preset.

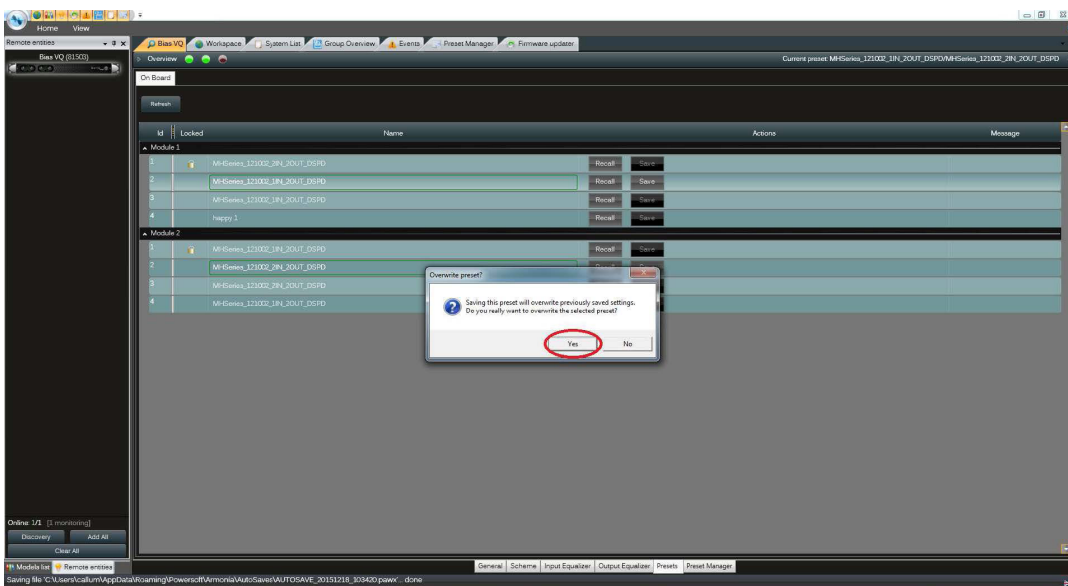


Bias VQ preset saving

- Once the preset has been loaded and any alterations made, go back to the presets screen and click on **Save**. Please note, this needs to be clicked on both modules. If this step is not followed, the amplifier will not remember the preset and will return to its original state on power up.



- A dialogue box will come up warning about overwriting previously saved settings. Click **Yes**.



Bias VQ preset saving

8. On power cycling, confirm that the LED on the rear of the unit is lit next to the preset that you have saved in to (in this case, preset bank 2)

